

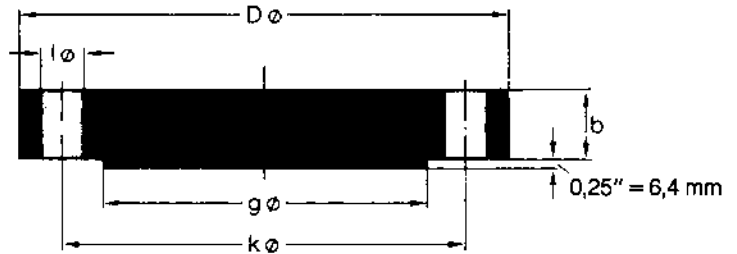
## ANSI B 16.5

Nominal Size	Pipe		Flange		Raised Face	Number	Drilling Template		Approx. Weight
	O D in. mm	D in. mm	b in. mm	g in. mm	l in. mm		k in. mm	≈ Pounds Kilo	
1/2"	0.84 21.3	3.50 88.9	0.44 11.2	1.38 35.1	4	0.62 15.7	2.38 60.5	0.9 0.42	
3/4"	1.05 26.7	3.88 98.6	0.50 12.7	1.69 42.9	4	0.62 15.7	2.75 69.9	1.3 0.61	
1"	1.315 33.4	4.25 108.0	0.56 14.2	2.00 50.8	4	0.62 15.7	3.12 79.2	1.9 0.86	
1 1/4"	1.66 42.2	4.62 117.3	0.62 15.7	2.50 63.5	4	0.62 15.7	3.50 88.9	2.6 1.17	
1 1/2"	1.90 48.3	5.00 127.0	0.69 17.5	2.88 73.2	4	0.62 15.7	3.88 98.6	3.4 1.53	
2"	2.375 60.3	6.00 152.4	0.75 19.1	3.62 91.9	4	0.75 19.1	4.75 120.7	5.3 2.42	
2 1/2"	2.875 73.0	7.00 177.8	0.88 22.4	4.12 104.6	4	0.75 19.1	5.50 139.7	8.7 3.94	
3"	3.50 88.9	7.50 190.5	0.94 23.9	5.00 127.0	4	0.75 19.1	6.00 152.4	10.9 4.93	
3 1/2"	4.00 101.6	8.50 215.9	0.94 23.9	5.50 139.7	8	0.75 19.1	7.00 177.8	13.6 6.17	
4"	4.50 114.3	9.00 228.6	0.94 23.9	6.19 157.2	8	0.75 19.1	7.50 190.5	15.4 7.00	
5"	5.563 141.3	10.00 254.0	0.94 23.9	7.31 185.7	8	0.88 22.4	8.50 215.9	19.0 8.63	
6"	6.625 168.3	11.00 279.4	1.00 25.4	8.50 215.9	8	0.88 22.4	9.50 241.3	24.9 11.3	
8"	8.625 219.1	13.50 342.9	1.12 28.4	10.62 269.7	8	0.88 22.4	11.75 298.5	43.2 19.6	
10"	10.75 273	16.00 406.4	1.19 30.2	12.75 323.9	12	1.00 25.4	14.25 362.0	63.4 28.8	
12"	12.75 323.8	19.00 482.6	1.25 31.8	15.00 381.0	12	1.00 25.4	17.00 431.8	95.2 43.2	
14"	14.0 355.6	21.00 533.4	1.38 35.1	16.25 412.8	12	1.12 28.4	18.75 476.3	128 58.1	
16"	16.0 406.4	23.50 596.9	1.44 36.6	18.50 469.9	16	1.12 28.4	21.25 539.8	167 76.0	
18"	18.0 457.2	25.00 635.0	1.56 39.6	21.00 533.4	16	1.25 31.8	22.75 577.9	206 93.7	
20"	20.0 508	27.50 698.5	1.69 42.9	23.00 584.2	20	1.25 31.8	25.00 635.0	269 122	
24"	24.0 609.6	32.00 812.8	1.88 47.8	27.25 692.2	20	1.38 35.1	29.50 749.3	408 185	



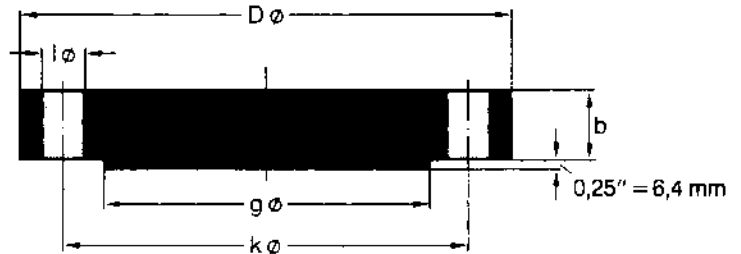
## ANSI B 16.5

Pipe		Flange		Raised Face	Number	Drilling Template		Approx. Weight
Nominal Size	O D in. mm	D in. mm	b in. mm	g in. mm		l in. mm	k in. mm	≈ Pounds Kilo
1/2"	0.84 21.3	3.75 95.2	0.56 14.2	1.38 35.0	4	0.62 15.7	2.62 66.5	1.4 0.64
3/4"	1.05 26.7	4.62 117.3	0.62 15.7	1.69 42.9	4	0.75 19.0	3.25 82.5	2.4 1.11
1"	1.315 33.4	4.88 123.9	0.69 17.5	2.00 50.8	4	0.75 19.0	3.50 88.9	3.1 1.39
1 1/4"	1.66 42.2	5.25 133.3	0.75 19.0	2.50 63.5	4	0.75 19.0	3.88 98.5	3.9 1.79
1 1/2"	1.90 48.3	6.12 155.4	0.81 20.6	2.88 73.1	4	0.88 22.3	4.50 114.3	5.9 2.66
2"	2.375 60.3	6.50 165.1	0.88 22.3	3.62 91.9	8	0.75 19.0	5.00 127.0	7.0 3.18
2 1/2"	2.875 73.0	7.50 190.5	1.00 25.4	4.12 104.6	8	0.88 22.3	5.88 149.3	10.7 4.85
3"	3.50 88.9	8.25 209.5	1.12 28.4	5.00 127.0	8	0.88 22.3	6.62 168.1	15.0 6.81
3 1/2"	4.00 101.6	9.00 228.6	1.19 30.2	5.50 139.7	8	0.88 22.3	7.25 184.1	19.2 8.71
4"	4.50 114.3	10.00 254.0	1.25 31.7	6.19 157.2	8	0.88 22.3	7.88 200.1	25.3 11.5
5"	5.563 141.3	11.00 279.4	1.38 35.0	7.31 185.6	8	0.88 22.3	9.25 234.9	34.4 15.6
6"	6.625 168.3	12.50 317.5	1.44 36.5	8.50 215.9	12	0.88 22.3	10.62 269.7	46.0 20.9
8"	8.625 219.1	15.00 381.0	1.62 41.1	10.62 269.7	12	1.00 25.4	13.00 330.2	75.6 34.3
10"	10.75 273	17.50 444.5	1.88 47.7	12.75 323.8	16	1.12 28.4	15.25 387.3	117 53.3
12"	12.75 323.8	20.50 520.7	2.00 50.8	15.00 381.0	16	1.25 31.7	17.75 450.8	174 78.8
14"	14.0 355.6	23.00 584.2	2.12 53.8	16.25 412.7	20	1.25 31.7	20.25 514.3	231 105
16"	16.0 406.4	25.50 647.7	2.25 57.1	18.50 469.9	20	1.38 35.0	22.50 571.5	302 137
18"	18.0 457.2	28.00 711.2	2.38 60.4	21.00 533.4	24	1.38 35.0	24.75 628.6	386 175
20"	20.0 508	30.50 774.7	2.50 63.5	23.00 584.2	24	1.38 35.0	27.00 685.8	487 221
24"	24.0 609.6	36.00 914.4	2.75 69.8	27.25 692.1	24	1.62 41.1	32.00 812.8	747 339



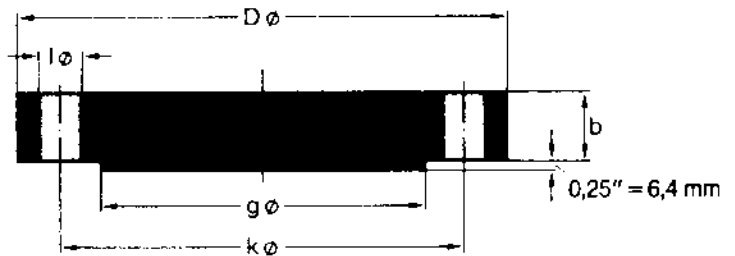
## ANSI B 16.5

Pipe		Flange		Raised Face	Number	Drilling Template		Approx. Weight ≈ Pounds Kilo
Nominal Size	O D in. mm	D in. mm	b in. mm	g in. mm		l in. mm	k in. mm	
1/2"	0,84 21,3	3,75 95,3	0,56 14,2	1,38 35,1	4	0,62 15,7	2,62 66,5	1,7 0,76
3/4"	1,05 26,7	4,62 117,3	0,62 15,7	1,69 42,9	4	0,75 19,1	3,25 82,6	2,8 1,28
1"	1,315 33,4	4,88 124,0	0,69 17,5	2,00 50,8	4	0,75 19,1	3,50 88,9	3,5 1,60
1 1/4"	1,66 42,2	5,25 133,4	0,81 20,6	2,50 63,5	4	0,75 19,1	3,88 98,6	4,9 2,23
1 1/2"	1,90 48,3	6,12 155,4	0,88 22,4	2,88 73,2	4	0,88 22,4	4,50 114,3	7,2 3,25
2"	2,375 60,3	6,50 165,1	1,00 25,4	3,62 91,9	8	0,75 19,1	5,00 127,0	9,1 4,15
2 1/2"	2,875 73,0	7,50 190,5	1,12 28,4	4,12 104,6	8	0,88 22,4	5,88 149,4	13,5 6,13
3"	3,50 88,9	8,25 209,6	1,25 31,8	5,00 127,0	8	0,88 22,4	6,62 168,1	18,6 8,44
3 1/2"	4,00 101,6	9,00 228,6	1,38 35,1	5,50 139,7	8	1,00 25,4	7,25 184,2	24,2 11,0
4"	4,50 114,3	10,75 273,1	1,50 38,1	6,19 157,2	8	1,00 25,4	8,50 215,9	38,1 17,3
5"	5,563 141,3	13,00 330,2	1,75 44,5	7,31 185,7	8	1,12 28,4	10,50 266,7	64,8 29,4
6"	6,625 168,3	14,00 355,6	1,88 47,8	8,50 215,9	12	1,12 28,4	11,50 292,1	79,5 36,1
8"	8,625 219,1	16,50 419,1	2,19 55,6	10,62 269,7	12	1,25 31,8	13,75 349,3	130 58,9
10"	10,75 273	20,00 508,0	2,50 63,5	12,75 323,9	16	1,38 35,1	17,00 431,8	215 97,5
12"	12,75 323,8	22,00 558,8	2,62 66,5	15,00 381,0	20	1,38 35,1	19,25 489,0	273 124
14"	14,0 355,6	23,75 603,3	2,75 69,9	16,25 412,8	20	1,50 38,1	20,75 527,1	333 151
16"	16,0 406,4	27,00 685,8	3,00 76,2	18,50 469,9	20	1,62 41,1	23,75 603,3	471 214
18"	18,0 457,2	29,25 743,0	3,25 82,6	21,00 533,4	20	1,75 44,5	25,75 654,1	599 272
20"	20,0 508	32,00 812,8	3,50 88,9	23,00 584,0	24	1,75 44,5	28,50 723,9	769 349
24"	24,0 609,6	37,00 939,8	4,00 101,6	27,25 692,2	24	2,00 50,8	33,00 838,2	1174 533



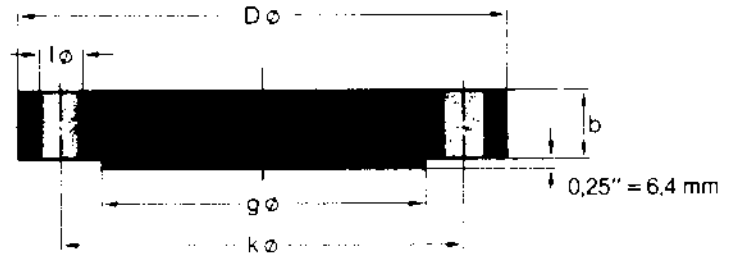
## ANSI B 16.5

Pipe		Flange		Raised Face	Number	Drilling Template		Approx. Weight
Nominal Size	OD in. mm	D in. mm	b in. mm	g in. mm		l in. mm	k in. mm	Pounds Kilo
1/2"	0.84 21.3							
3/4"	1.05 26.7							
1"	1.315 33.4							
1 1/4"	1.66 42.2							
1 1/2"	1.90 48.3							
2"	2.375 60.3							
2 1/2"	2.875 73.0							
Use 1500 lb dimensions for these sizes								
3"	3.50 88.9	9.50 241.3	1.50 38.1	5.00 127.0	8	1.00 25.4	7.50 190.5	28.9 13.1
4"	4.50 114.3	11.50 292.1	1.75 44.4	6.19 157.2	8	1.25 31.7	9.25 234.9	59.3 26.9
5"	5.563 141.3	13.75 349.2	2.00 50.8	7.31 185.6	8	1.38 35.0	11.00 279.4	80.4 36.5
6"	6.625 168.3	15.00 381.0	2.19 55.6	8.50 215.9	12	1.25 31.7	12.50 317.5	104 47.4
8"	8.625 219.1	18.50 469.9	2.50 63.5	10.62 269.7	12	1.50 38.1	15.50 393.7	182 82.5
10"	10.75 273	21.50 546.1	2.75 69.8	12.75 323.8	16	1.50 38.1	18.50 469.9	269 122
12"	12.75 323.8	24.00 609.6	3.12 79.2	15.00 381.0	20	1.50 38.1	21.00 533.4	381 173
14"	14.0 355.6	25.25 641.3	3.38 85.8	16.25 412.7	20	1.62 41.1	22.00 558.8	454 206
16"	16.0 406.4	27.75 704.8	3.50 88.9	18.50 469.9	20	1.75 44.4	24.25 615.9	571 259
18"	18.0 457.2	31.00 787.4	4.00 101.6	21.00 533.4	20	2.00 50.8	27.00 685.8	808 367
20"	20.0 508	33.75 857.2	4.25 107.9	23.00 584.2	20	2.12 53.8	29.50 749.3	1020 463
24"	24.0 609.6	41.00 1041.4	5.50 139.7	27.25 692.1	20	2.62 66.5	35.50 901.7	1930 876



## ANSI B 16.5

Pipe		Flange		Raised Face	Number	Drilling Template		Approx. Weight
Nominal Size	O.D. in. mm	D in. mm	b in. mm	g in. mm		l in. mm	k in. mm	= Pounds Kilo
1/2"	0,84 21,3	4,75 120,6	0,88 22,3	1,38 35,0	4	0,88 22,3	3,25 82,5	3,9 1,77
3/4"	1,05 26,7	5,12 130,0	1,00 25,4	1,69 42,9	4	0,88 22,3	3,50 88,9	5,3 2,42
1"	1,315 33,4	5,88 149,3	1,12 28,4	2,00 50,8	4	1,00 25,4	4,00 101,6	7,9 3,57
1 1/4"	1,66 42,2	6,25 158,7	1,12 28,4	2,50 63,5	4	1,00 25,4	4,38 111,2	9,1 4,14
1 1/2"	1,90 48,3	7,00 177,8	1,25 31,7	2,88 73,1	4	1,12 28,4	4,88 123,9	12,7 5,75
2"	2,375 60,3	8,50 215,9	1,50 38,1	3,62 91,9	8	1,00 25,4	6,50 165,1	22,2 10,1
2 1/2"	2,875 73,0	9,62 244,3	1,62 41,1	4,12 104,6	8	1,12 28,4	7,50 190,5	30,8 14,0
3"	3,50 88,9	10,50 266,7	1,88 47,7	5,00 127,0	8	1,25 31,7	8,00 203,2	42,1 19,1
4"	4,50 114,3	12,25 311,1	2,12 53,8	6,19 157,2	8	1,38 35,0	9,50 241,3	65,9 29,9
5"	5,563 141,3	14,75 374,6	2,88 73,1	7,31 185,6	8	1,62 41,1	11,50 292,1	129 58,4
6"	6,625 168,3	15,50 393,7	3,25 82,5	8,50 215,9	12	1,50 38,1	12,50 317,5	158 71,8
8"	8,625 219,1	19,00 482,6	3,62 91,9	10,62 269,7	12	1,75 44,4	15,50 393,7	269 122
10"	10,75 273	23,00 584,2	4,25 107,9	12,75 323,8	12	2,00 50,8	19,00 482,6	463 210
12"	12,75 323,8	26,50 673,1	4,88 123,9	15,00 381,0	16	2,12 53,8	22,50 571,5	696 316
14"	14,0 355,6	29,50 749,3	5,25 133,3	16,25 412,7	16	2,38 60,4	25,00 635,0	925 420
16"	16,0 406,4	32,50 825,5	5,75 146,0	18,50 469,9	16	2,62 66,5	27,75 704,8	1229 558
18"	18,0 457,2	36,00 914,4	6,38 162,0	21,00 533,4	16	2,88 73,1	30,50 774,7	1674 760
20"	20,0 508	38,75 984,2	7,00 177,8	23,00 584,2	16	3,12 79,2	32,75 831,8	2126 965
24"	24,0 609,6	46,00 1168,4	8,00 203,2	27,25 692,1	16	3,62 91,9	39,00 990,6	3432 1558



## ANSI B 16.5

Pipe		Flange		Raised Face	Number	Drilling Template		Approx. Weight
Nominal Size	O.D. in mm	D in mm	b in mm	g in mm		l in mm	k in mm	Pounds Kilo
1 1/2"	0.84 21.3	5.25 133.4	1.19 30.2	1.38 35.1	4	0.88 22.4	3.50 88.5	8.6 2.99
3/4"	1.05 26.7	5.50 139.7	1.25 31.8	1.69 42.9	4	0.88 22.4	3.75 95.3	7.7 3.50
1"	1.315 33.4	6.25 158.8	1.38 35.1	2.00 50.8	4	1.00 25.4	4.25 108.0	10.9 4.96
1 1/4"	1.66 42.2	7.25 184.2	1.50 38.1	2.50 63.5	4	1.12 28.4	5.12 130.0	16.2 7.35
1 1/2"	1.90 48.3	8.00 203.2	1.75 44.5	2.88 73.2	4	1.25 31.8	5.75 146.1	22.9 10.4
2"	2.375 60.3	9.25 235.0	2.00 50.8	3.62 91.9	8	1.12 28.4	6.75 171.5	34.4 15.6
2 1/2"	2.875 73.0	10.50 266.7	2.25 57.2	4.12 104.6	8	1.25 31.8	7.75 196.9	49.8 22.6
3"	3.50 88.9	12.00 304.8	2.62 66.5	5.00 127.0	8	1.38 35.1	9.00 228.6	76.7 34.8
4"	4.50 114.3	14.00 355.6	3.00 76.2	6.19 157.2	8	1.62 41.1	10.75 273.1	119 53.9
5"	5.563 141.3	16.50 419.1	3.62 91.9	7.31 185.7	8	1.88 47.8	12.75 323.9	200 90.8
6"	6.625 168.3	19.00 482.6	4.25 108.0	8.50 215.9	8	2.12 53.8	14.50 368.3	311 141
8"	8.625 219.1	21.75 552.5	5.00 127.0	10.62 269.7	12	2.12 53.8	17.25 438.2	471 214
10"	10.75 273	26.50 673.1	6.50 165.1	12.75 323.9	12	2.62 66.5	21.25 539.8	905 411
12"	12.75 323.8	30.00 762.0	7.25 184.2	15.00 381.0	12	2.88 73.2	24.38 619.3	1304 592