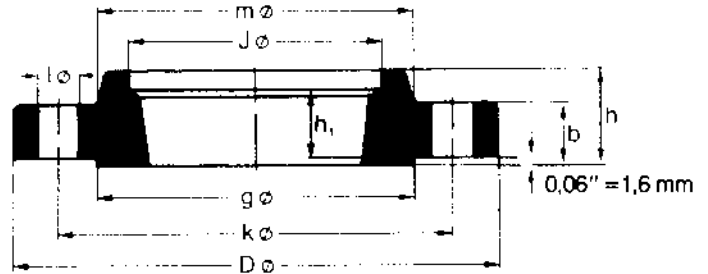


Thread type: Standard taper pipe thread to ANSI B 2.1

**ANSI B 16.5**

Pipe		Flange			Hub	Raised Face	Drilling Template			Approx. Weight	
Nom. Size	OD in. mm	D in. mm	J in. mm	b in. mm	h/h in. mm	m in. mm	g in. mm	Number	l in. mm	k in. mm	Pounds Kilo
1/2"	0.84	3.50	-	0.44	0.62	1.19	1.38	4	0.62	2.38	0.9
	21.3	88.9		11.2	15.7	30.2	35.1		15.7	60.5	0.39
3/4"	1.05	3.88	-	0.50	0.62	1.50	1.69	4	0.62	2.75	1.2
	26.7	98.6		12.7	15.7	38.1	42.9		15.7	69.9	0.56
1"	1.315	4.25	-	0.56	0.69	1.94	2.00	4	0.62	3.12	1.7
	33.4	108.0		14.2	17.5	49.3	50.8		15.7	79.2	0.78
1 1/4"	1.66	4.62	-	0.62	0.81	2.31	2.50	4	0.62	3.50	2.3
	42.2	117.3		15.7	20.6	58.7	63.5		15.7	88.9	1.03
1 1/2"	1.90	5.00	-	0.69	0.88	2.56	2.88	4	0.62	3.88	2.9
	48.3	127.0		17.5	22.4	65.0	73.2		15.7	98.6	1.32
2"	2.375	6.00	-	0.75	1.00	3.06	3.62	4	0.75	4.75	4.5
	60.3	152.4		19.1	25.4	77.7	91.9		19.1	120.7	2.06
2 1/2"	2.875	7.00	-	0.88	1.12	3.56	4.12	4	0.75	5.50	7.2
	73.0	177.8		22.4	28.4	90.4	104.6		19.1	139.7	3.28
3"	3.50	7.50	-	0.94	1.19	4.25	5.00	4	0.75	6.00	8.5
	88.9	190.5		23.9	30.2	108.0	127.0		19.1	152.4	3.85
3 1/2"	4.00	8.50	-	0.94	1.25	4.81	5.50	8	0.75	7.00	10.6
	101.6	215.9		23.9	31.8	122.2	139.7		19.1	177.8	4.81
4"	4.50	9.00	-	0.94	1.31	5.31	6.19	8	0.75	7.50	11.7
	114.3	228.6		23.9	33.3	134.9	157.2		19.1	190.5	5.30
5"	5.563	10.00	-	0.94	1.44	6.44	7.31	8	0.88	8.50	13.4
	141.3	254.0		23.9	36.6	163.6	185.7		22.4	215.9	6.07
6"	6.625	11.00	-	1.00	1.56	7.56	8.50	8	0.88	9.50	16.4
	168.3	279.4		25.4	39.6	192.0	215.9		22.4	241.3	7.45
8"	8.625	13.50	-	1.12	1.75	9.69	10.62	8	0.88	11.75	26.7
	219.1	342.9		28.4	44.5	246.1	269.7		22.4	298.5	12.1
10"	10.75	16.00	-	1.19	1.94	12.00	12.75	12	1.00	14.25	36.3
	273	406.4		30.2	49.3	304.8	323.9		25.4	362.0	16.5
12"	12.75	19.00	-	1.25	2.19	14.38	15.00	12	1.00	17.00	57.7
	323.8	482.6		31.8	55.6	365.3	381.0		25.4	431.8	26.2
14"	14.0	21.00	-	1.38	2.25	15.75	16.25	12	1.12	18.75	76.2
	355.6	533.4		35.1	57.2	400.1	412.8		28.4	476.3	34.6
16"	16.0	23.50	-	1.44	2.50	18.00	18.50	16	1.12	21.25	98.7
	406.4	596.9		36.6	63.5	457.2	469.9		28.4	539.8	44.8
18"	18.0	25.00	-	1.56	2.69	19.88	21.00	16	1.25	22.75	108
	457.2	635.0		39.6	68.3	505.0	533.4		31.8	577.9	48.9
20"	20.0	27.50	-	1.69	2.88	22.00	23.00	20	1.25	25.00	136
	508	698.5		42.9	73.2	558.8	584.2		31.8	635.0	61.9
24"	24.0	32.00	-	1.88	3.25	26.12	27.25	20	1.38	29.50	191
	609.6	812.8		47.8	82.6	663.4	692.2		35.1	749.3	86.9

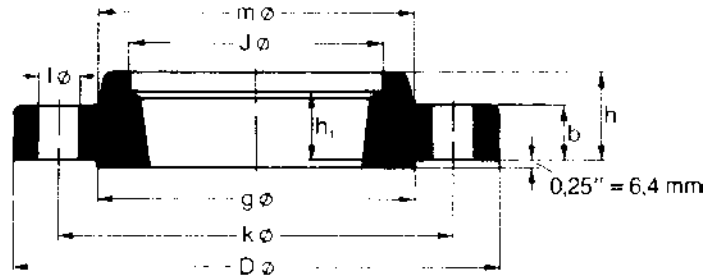
No Counter Bore Required on 150 lb Threaded Flanges



Thread type: Standard taper pipe thread to ANSI B 2.1

## ANSI B 16.5

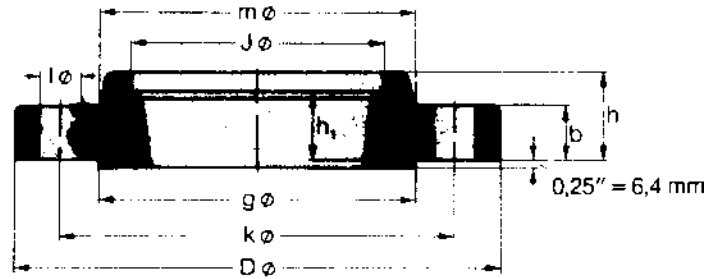
Pipe		Flange					Hub	Raised Face	Drilling Template			Approx. Weight
Nom Size	OD in. mm	D in. mm	J in. mm	b in. mm	h in. mm	h in. mm	m in. mm	g in. mm	Number	l in. mm	k in. mm	Pounds Kilo
1/2"	0.84 21.3	3.75 95.2	0.93 23.6	0.56 14.2	0.88 22.3	0.62 15.7	1.50 38.1	1.38 35.0	4	0.62 15.7	2.62 66.5	1.4 0.64
3/4"	1.05 26.7	4.62 117.3	1.14 29.0	0.62 15.7	1.00 25.4	0.62 15.7	1.88 47.7	1.69 42.9	4	0.75 19.0	3.25 82.5	2.5 1.12
1"	1.315 33.4	4.88 123.9	1.41 35.8	0.69 17.5	1.06 26.9	0.69 17.5	2.12 53.8	2.00 50.8	4	0.75 19.0	3.50 88.9	3.0 1.36
1 1/4"	1.66 42.2	5.25 133.3	1.75 44.4	0.75 19.0	1.06 26.9	0.81 20.5	2.50 63.5	2.50 63.5	4	0.75 19.0	3.88 98.5	3.7 1.68
1 1/2"	1.90 48.3	6.12 155.4	1.99 50.5	0.81 20.6	1.19 30.2	0.88 22.3	2.75 69.8	2.88 73.1	4	0.88 22.3	4.50 114.3	5.5 2.49
2"	2.375 60.3	6.50 165.1	2.50 63.5	0.88 22.3	1.31 33.2	1.12 28.4	3.31 84.0	3.62 91.9	8	0.75 19.0	5.00 127.0	6.3 2.87
2 1/2"	2.875 73.0	7.50 190.5	3.00 76.2	1.00 25.4	1.50 38.1	1.25 31.7	3.94 100.0	4.12 104.6	8	0.88 22.3	5.88 149.3	9.5 4.32
3"	3.50 88.9	8.25 209.5	3.63 92.2	1.12 28.4	1.69 42.9	1.25 31.7	4.62 117.3	5.00 127.0	8	0.88 22.3	6.62 168.1	12.9 5.85
3 1/2"	4.00 101.6	9.00 228.6	4.13 104.9	1.19 30.2	1.75 44.4	1.44 36.5	5.25 133.3	5.50 139.7	8	0.88 22.3	7.25 184.1	16.2 7.34
4"	4.50 114.3	10.00 254.0	4.63 117.6	1.25 31.7	1.88 47.7	1.44 36.5	5.75 146.0	6.19 157.2	8	0.88 22.3	7.88 200.1	21.2 9.61
5"	5.563 141.3	11.00 279.4	5.69 144.5	1.38 35.0	2.00 50.8	1.69 42.9	7.00 177.8	7.31 185.6	8	0.88 22.3	9.25 234.9	27.1 12.3
6"	6.625 168.3	12.50 317.5	6.75 171.4	1.44 36.5	2.06 52.3	1.81 45.9	8.12 206.2	8.50 215.9	12	0.88 22.3	10.62 269.7	34.4 15.6
8"	8.625 219.1	15.00 381.0	8.75 222.2	1.62 41.1	2.44 61.9	2.00 50.8	10.25 260.3	10.62 269.7	12	1.00 25.4	13.00 330.2	53.3 24.2
10"	10.75 273	17.50 444.5	10.88 276.3	1.88 47.7	2.62 66.5	2.19 55.6	12.62 320.5	12.75 323.8	16	1.12 28.4	15.25 387.3	75.1 34.1
12"	12.75 323.8	20.50 520.7	12.94 328.7	2.00 50.8	2.88 73.1	2.38 60.4	14.75 374.6	15.00 381.0	16	1.25 31.7	17.75 450.8	110 49.8
14"	14.0 355.6	23.00 584.2	14.19 360.4	2.12 53.8	3.00 76.2	2.50 63.5	16.75 425.4	16.25 412.7	20	1.25 31.7	20.25 514.3	154 69.9
16"	16.0 406.4	25.50 647.7	16.19 411.2	2.25 57.1	3.25 82.5	2.69 68.3	19.00 482.6	18.50 469.9	20	1.38 35.0	22.50 571.5	194 88.1
18"	18.0 457.2	28.00 711.2	18.19 462	2.38 60.4	3.50 88.9	2.75 69.8	21.00 533.4	21.00 533.4	24	1.38 35.0	24.75 628.6	240 109
20"	20.0 508	30.50 774.7	20.19 512.8	2.50 63.5	3.75 95.2	2.88 73.1	23.12 587.2	23.00 584.2	24	1.38 35.0	27.00 685.8	295 134
24"	24.0 609.6	36.00 914.4	24.19 614.4	2.75 69.8	4.19 106.4	3.25 82.5	27.62 701.5	27.25 692.1	24	1.62 41.1	32.00 812.8	443 201



Thread type: Standard taper pipe thread to ANSI B 2.1

## ANSI B 16.5

Pipe	Flange						Hub	Raised Face	Drilling Template			Approx. Weight
	Nom. Size	O.D. in. mm	D in. mm	J in. mm	b in. mm	h in. mm			h in. mm	m in. mm	g in. mm	
1/2"	0.84 21.3	3.75 95.3	0.93 23.6	0.56 14.2	0.88 22.4	0.62 15.7	1.50 38.1	1.38 35.1	4	0.62 15.7	2.62 66.5	1.6 0.74
3/4"	1.05 26.7	4.62 117.3	1.14 29.0	0.62 15.7	1.00 25.4	0.62 15.7	1.88 47.8	1.69 42.9	4	0.75 19.1	3.25 82.6	2.8 1.27
1"	1.315 33.4	4.88 124.0	1.41 35.8	0.69 17.5	1.06 26.9	0.69 17.5	2.12 53.8	2.00 50.8	4	0.75 19.1	3.50 88.9	3.3 1.52
1 1/4"	1.66 42.2	5.25 133.4	1.75 44.5	0.81 20.6	1.12 28.4	0.81 20.6	2.50 63.5	2.50 63.5	4	0.75 19.1	3.88 98.6	4.5 2.03
1 1/2"	1.90 48.3	6.12 155.4	1.99 50.5	0.88 22.4	1.25 31.8	0.88 22.4	2.75 69.9	2.88 73.1	4	0.88 22.4	4.50 114.3	6.5 2.96
2"	2.375 60.3	6.50 165.1	2.50 63.5	1.00 25.4	1.44 36.6	1.12 28.4	3.31 84.1	3.62 91.9	8	0.75 19.1	5.00 127.0	8.0 3.62
2 1/2"	2.875 73.0	7.50 190.5	3.00 76.2	1.12 28.4	1.62 41.1	1.25 31.8	3.94 100.1	4.12 104.6	8	0.88 22.4	5.88 149.4	11.6 5.28
3"	3.50 88.9	8.25 209.6	3.63 92.2	1.25 31.8	1.81 46.0	1.38 35.1	4.62 117.3	5.00 127.0	8	0.88 22.4	6.62 168.1	15.4 7.00
3 1/2"	4.00 101.6	9.00 228.6	4.13 104.9	1.38 35.1	1.94 49.3	1.56 39.6	5.25 133.4	5.50 139.7	8	1.00 25.4	7.25 184.2	19.5 8.84
4"	4.50 114.3	10.75 273.1	4.63 117.6	1.50 38.1	2.12 53.8	1.62 41.1	6.00 152.4	6.19 157.2	8	1.00 25.4	8.50 215.9	31.9 14.5
5"	5.563 141.3	13.00 330.2	5.69 144.5	1.75 44.5	2.38 60.5	1.88 47.8	7.44 189.0	7.31 185.7	8	1.12 28.4	10.50 266.7	53.7 24.4
6"	6.625 168.3	14.00 355.6	6.75 171.5	1.88 47.8	2.62 66.5	2.00 50.8	8.75 222.3	8.50 215.9	12	1.12 28.4	11.50 292.1	63.2 28.7
8"	8.625 219.1	16.50 419.1	8.75 222.3	2.19 55.6	3.00 76.2	2.25 57.2	10.75 273.1	10.62 269.7	12	1.25 31.8	13.75 349.3	95.6 43.4
10"	10.75 273	20.00 508.0	10.88 276.4	2.50 63.5	3.38 85.9	2.56 65.0	13.50 342.9	12.75 323.9	16	1.38 35.1	17.00 431.8	155 70.3
12"	12.75 323.8	22.00 558.8	12.94 328.7	2.62 66.5	3.62 91.9	2.75 69.9	15.75 400.1	15.00 381.0	20	1.38 35.1	19.25 489.0	186 84.2
14"	14.0 355.6	23.75 603.3	14.19 360.4	2.75 69.9	3.69 93.7	2.88 73.2	17.00 431.8	16.25 412.8	20	1.50 38.1	20.75 527.1	217 98.7
16"	16.0 406.4	27.00 685.8	16.19 411.2	3.00 76.2	4.19 106.4	3.06 77.7	19.50 495.3	18.50 469.9	20	1.62 41.1	23.75 603.3	313 142
18"	18.0 457.2	29.25 743.0	18.19 462.0	3.25 82.6	4.62 117.3	3.12 79.2	21.50 546.1	21.00 533.4	20	1.75 44.5	25.75 654.1	381 173
20"	20.0 508	32.00 812.8	20.19 512.8	3.50 88.9	5.00 127.0	3.25 82.6	24.00 609.6	23.00 584.2	24	1.75 44.5	28.50 723.9	485 220
24"	24.0 609.6	37.00 939.8	24.19 614.4	4.00 101.6	5.50 139.7	3.62 91.9	28.25 717.6	27.25 692.2	24	2.00 50.8	33.00 838.2	687 312

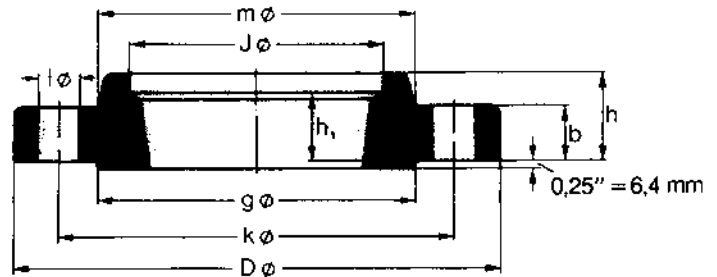


Thread type: Standard taper pipe thread to ANSI B 2.1

## ANSI B 16.5

Pipe		Flange					Hub	Raised Face	Drilling Template			Approx. Weight
Nom. Size	O.D. in. mm	D in. mm	J in. mm	b in. mm	h in. mm	h in. mm	m in. mm	g in. mm	Number	l in. mm	k in. mm	Pounds Kilo
1/2"	0.84 21.3											
3/4"	1.05 26.7											
1"	1.315 33.4											
1 1/4"	1.66 42.2											
1 1/2"	1.90 48.3											
2"	2.375 60.3											
2 1/2"	2.875 73.0											
3"	3.50 88.9	9.50 241.3	3.63 92.2	1.50 38.1	2.12 53.8	1.62 41.1	5.00 127.0	5.00 127.0	8	1.00 25.4	7.50 190.5	25.6 11.6
4"	4.50 114.3	11.50 292.1	4.63 117.6	1.75 44.4	2.75 69.8	1.88 47.8	6.25 158.7	6.19 157.2	8	1.25 31.7	9.25 234.9	43.4 19.7
5"	5.563 141.3	12.75 349.2	5.63 144.5	2.00 50.8	3.12 79.2	2.12 53.8	7.50 190.5	7.31 185.6	8	1.38 35.0	11.00 279.4	70.3 31.9
6"	6.625 168.3	15.00 381.0	6.75 171.4	2.19 55.6	3.38 85.8	2.25 57.1	9.25 234.9	8.50 215.9	12	1.25 31.7	12.50 317.5	90.5 41.1
8"	8.625 219.1	18.50 469.9	8.75 222.2	2.50 63.5	4.00 101.6	2.50 63.5	11.75 298.4	10.62 269.7	12	1.50 38.1	15.50 393.7	156 70.7
10"	10.75 273	21.50 546.1	10.88 276.3	2.75 69.8	4.25 107.9	2.81 71.4	14.50 368.3	12.75 323.8	16	1.50 38.1	18.50 469.9	223 101
12"	12.75 323.8	24.00 609.6	12.94 328.7	3.12 79.4	4.62 117.3	3.00 76.2	16.50 419.1	15.00 381.0	20	1.50 38.1	21.00 533.4	293 133
14"	14.0 355.6	25.25 641.3	14.19 360.4	3.38 85.7	5.12 130.0	3.25 82.5	17.75 450.8	16.25 412.7	20	1.62 41.1	22.00 558.8	337 153
16"	16.0 406.4	27.75 704.8	16.19 411.2	3.50 88.9	5.25 133.3	3.38 85.9	20.00 508.0	18.50 469.9	20	1.75 44.4	24.25 618.9	408 185
18"	18.0 457.2	31.00 787.4	18.19 462.0	4.00 101.6	6.00 152.4	3.50 88.9	22.25 565.1	21.00 533.4	20	2.00 50.8	27.00 685.8	568 258
20"	20.0 508	33.75 857.2	20.19 512.8	4.25 107.9	6.25 158.7	3.62 91.9	24.50 622.3	23.00 584.2	20	2.12 53.8	29.50 749.3	698 317
24"	24.0 609.6	41.00 1041.4	24.19 614.4	5.50 139.7	8.00 203.2	4.00 101.6	29.50 749.3	27.25 692.1	20	2.62 66.5	35.50 901.7	1335 606

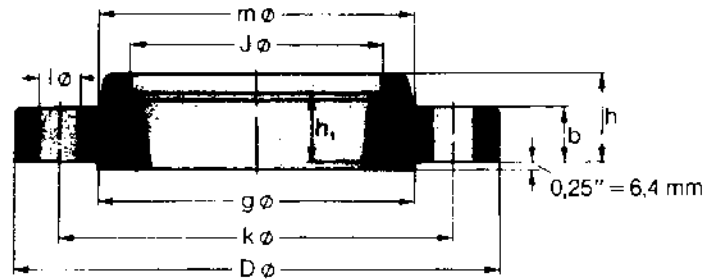
Use 1500 lb dimensions for these sizes



Thread type: Standard taper pipe thread to ANSI B 2.1

## ANSI B 16.5

Pipe		Flange					Hub	Raised Face	Drilling Template			Approx. Weight
Nom. Size	OD in. mm	D in. mm	J in. mm	b in. mm	h in. mm	h in. mm	m in. mm	g in. mm	Number	l in. mm	k in. mm	≈ Pounds Kilo
1/2"	0,84 21,3	4,75 120,6	0,93 23,6	0,88 22,3	2,38 60,4	0,88 22,3	1,50 38,1	1,38 35,0	4	0,88 22,3	3,25 82,5	3,8 1,74
3/4"	1,05 26,7	5,12 130,0	1,14 29,0	1,00 25,4	2,75 69,8	1,00 25,4	1,75 44,4	1,69 42,9	4	0,88 22,3	3,50 88,9	5,2 2,34
1"	1,315 33,4	5,88 149,3	1,41 35,8	1,12 28,4	2,88 73,1	1,12 28,4	2,06 52,3	2,00 50,8	4	1,00 25,4	4,00 101,6	7,6 3,44
1 1/4"	1,66 42,2	6,25 158,7	1,75 44,4	1,12 28,4	2,88 73,1	1,19 30,2	2,50 63,5	2,50 63,5	4	1,00 25,4	4,38 111,2	8,6 3,91
1 1/2"	1,90 48,3	7,00 177,8	1,99 50,5	1,25 31,7	3,25 82,5	1,25 31,7	2,75 69,8	2,88 73,1	4	1,12 28,4	4,88 123,9	11,8 5,36
2"	2,375 60,3	8,50 215,9	2,50 63,5	1,50 38,1	4,00 101,6	1,50 38,1	4,12 104,6	3,62 91,9	8	1,00 25,4	6,50 165,1	21,7 9,85
2 1/2"	2,875 73,0	9,62 244,3	3,00 76,2	1,62 41,1	4,12 104,6	1,88 47,7	4,88 123,9	4,12 104,6	8	1,12 28,4	7,50 190,5	30,2 13,7
3"	3,50 88,9	10,50 266,7	3,63 92,2	1,88 47,7	4,62 117,3	2,00 50,8	5,25 133,3	5,00 127,0	8	1,25 31,7	8,00 203,2	39,4 17,9
4"	4,50 114,3	12,25 311,1	4,63 117,6	2,12 53,8	4,88 123,9	2,25 57,1	6,38 162,0	6,19 157,2	8	1,38 35,0	9,50 241,3	61,2 27,8
5"	5,563 141,3	14,75 374,6	5,69 144,5	2,88 73,1	6,12 155,4	2,50 63,5	7,75 196,8	7,31 185,6	8	1,62 41,1	11,50 292,1	114 51,8
6"	6,625 168,3	15,50 393,7	6,75 171,4	3,25 82,5	6,75 171,4	2,75 69,8	9,00 228,6	8,50 215,9	12	1,50 38,1	12,50 317,5	134 61,0
8"	8,625 219,1	19,00 482,6	8,75 222,2	3,62 91,9	8,38 212,8	3,00 76,2	11,50 292,1	10,62 269,7	12	1,75 44,4	15,50 393,7	227 103
10"	10,75 273	23,00 584,2	10,88 276,3	4,25 107,9	10,00 254,0	3,31 84,0	14,50 368,3	12,75 323,8	12	2,00 50,8	19,00 482,6	386 175
12"	12,75 323,8	26,50 673,1	12,94 328,7	4,88 123,9	11,12 282,4	3,62 91,9	17,75 450,8	15,00 381,0	16	2,12 53,8	22,50 571,5	582 264



Thread type: Standard taper pipe thread to ANSI B 2.1

## ANSI B 16.5

Pipe		Flange					Hub	Raised Face	Drilling Template			Approx. Weight
Nom Size	O D in. mm	D in. mm	J in. mm	b in. mm	h in. mm	h in. mm	m in. mm	g in. mm	Number	l in. mm	k in. mm	Pounds Kilo
1/2"	0.84 21.3	5.25 133.4	0.93 23.6	1.19 30.2	1.56 39.6	1.12 28.4	1.69 42.9	1.38 35.1	4	0.88 22.4	3.50 88.5	6.5 2.95
3/4"	1.05 26.7	5.50 139.7	1.14 29.0	1.25 31.8	1.69 42.9	1.25 31.8	2.00 50.8	1.69 42.9	4	0.88 22.4	3.75 95.3	7.6 3.44
1"	1.315 33.4	6.25 158.8	1.41 35.8	1.38 35.1	1.88 47.8	1.38 35.1	2.25 57.2	2.00 50.8	4	1.00 25.4	4.25 108.0	10.6 4.82
1 1/4"	1.66 42.2	7.25 184.2	1.75 44.5	1.50 38.1	2.06 52.3	1.50 38.1	2.88 73.2	2.50 63.5	4	1.12 28.4	5.12 130.0	15.7 7.14
1 1/2"	1.90 48.3	8.00 203.2	1.99 50.5	1.75 44.5	2.38 60.5	1.75 44.5	3.12 79.2	2.88 73.2	4	1.25 31.8	5.75 146.1	22.0 10.0
2"	2.375 60.3	9.25 235.0	2.50 63.5	2.00 50.8	2.75 69.9	2.00 50.8	3.75 95.3	3.62 91.9	8	1.12 28.4	6.75 171.5	32.6 14.8
2 1/2"	2.875 73.0	10.50 266.7	3.00 76.2	2.25 57.2	3.12 79.2	2.25 57.2	4.50 114.3	4.12 104.6	8	1.25 31.8	7.75 196.9	47.4 21.5
3"	3.50 88.9	12.00 304.8	3.63 92.2	2.62 66.5	3.62 91.9	2.50 63.5	5.25 133.4	5.00 127.0	8	1.38 35.1	9.00 228.6	71.8 32.6
4"	4.50 114.3	14.00 355.6	4.63 117.6	3.00 76.2	4.25 108.0	2.75 69.9	6.50 165.1	6.19 157.2	8	1.62 41.1	10.75 273.1	117 52.9
5"	5.563 141.3	16.50 419.1	5.69 144.5	3.62 91.9	5.12 130.0	3.00 76.2	8.00 203.2	7.31 185.7	8	1.88 47.8	12.75 323.9	183 83.1
6"	6.625 168.3	19.00 482.6	6.75 171.5	4.25 108.0	6.00 152.4	3.25 82.6	9.25 235.0	8.50 215.9	8	2.12 53.8	14.50 368.3	282 128
8"	8.625 219.1	21.75 552.5	8.75 222.3	5.00 127.0	7.00 177.8	3.75 95.3	12.00 304.8	10.62 269.7	12	2.12 53.8	17.25 438.2	414 188
10"	10.75 273	26.50 673.1	10.88 276.4	6.50 165.1	9.00 228.6	4.25 108.0	14.75 374.7	12.75 323.9	12	2.62 66.5	21.25 539.8	782 355
12"	12.75 323.8	30.00 762.0	12.94 328.7	7.25 184.2	10.00 254.0	4.75 120.7	17.38 441.5	15.00 381.0	12	2.88 73.2	24.38 619.3	1110 504